

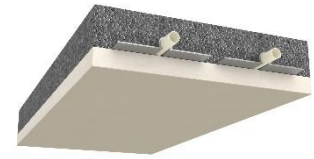
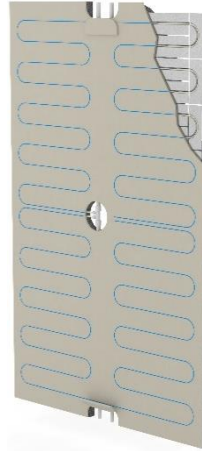
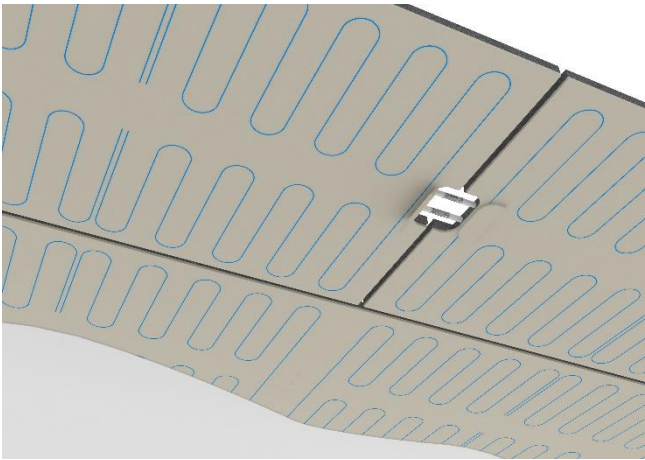


**AF SERVICE**  
RADIANT EMOTION

**100%**  
MADE IN ITALY

**RAYGEX TECH ALU**  
Codice: RYX TA  
Versione: INSTALLAZIONE

**SCHEDA TECNICA 8.18**



**STRATIGRAFIA**

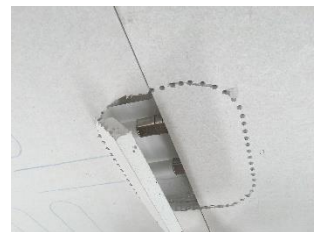
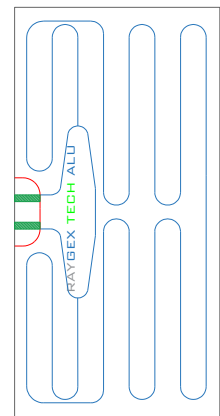
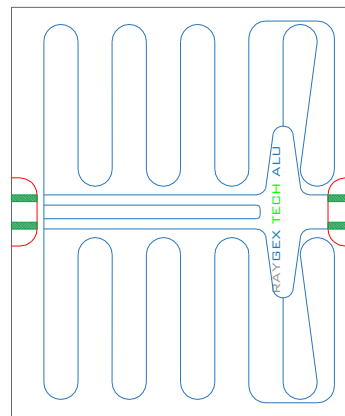
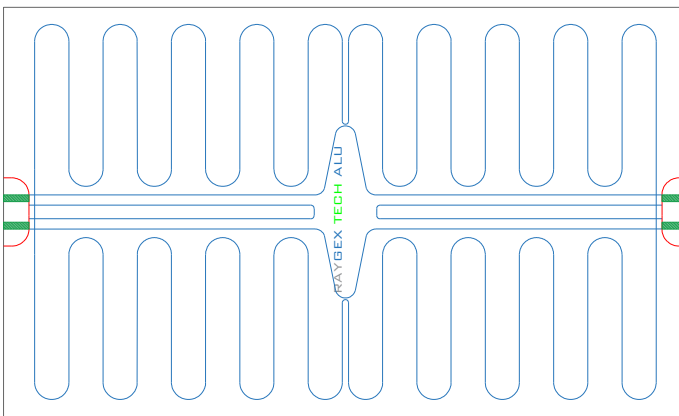
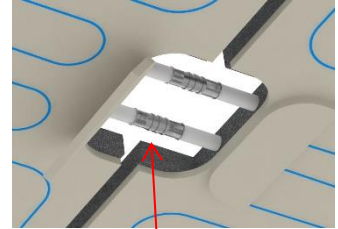
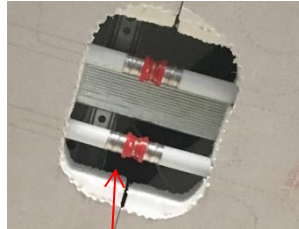
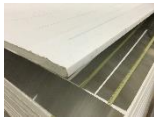
Lastra in cartongesso

Isolante 30 mm con diffusori in alluminio

Tubo 8-10 mm

Collettore interno con dorsali dinamiche

PER L'ALLACCIAMENTO IDRAULICO TRA PANNELLI SI DEVONO RACCORDARE LE DORSALI IN MULTISTRATO 20 MM MEDIANTE RACCORDERIA A PRESSARE, STRINGERE O A INNESTO RAPIDO





**AF SERVICE**  
RADIANT EMOTION

**100%**  
MADE IN ITALY

**RAYGEX TECH ALU**  
Codice: RYX TA  
Versione: INSTALLAZIONE

Struttura metallica: standard con passo 40 o 50 cm

Raccordi: a pressione, a stringere, a innesto rapido, a bottone

Collegamenti: massimo 12 mq per ogni stacco del collettore

Finitura: standard per cartongesso

